
A STUDY OF MENTALITY OF A SUCCESSFUL STUDENT IN MOVIE AKEELAH AND THE BEE BY DOUG ATCHISON AND IT'S IMPLICATION TO STUDENTS' MENTALITY BUILDING

Yudha Gugu Prawira^{1*}, Muhammad Fadji², Kamaludin Yusra³
Universitas Mataram
*email: yudhaprawira857@yahoo.com

ABSTRACT

Literary work is a creative, imaginative, and artistic activity. Literature is part of culture. When we study culture, we cannot see it as something static that never changes, but is a dynamic one that is always changing. One of the literary work is motion picture/movie. Every action and desire of an actor must have an acceptable reason. As in the film Akeelah and the Bee, all actors / characters or actors in this film always reflect a mentality value that is acceptable to the audience in general. So it is very good to do an analysis of the value of the mentality in it. This research aims to describe how the mentality of the successful students in the film Akeelah and the Bee by Doug Atchison. This research is Descriptive Qualitative Research. Sources of data in this study are the entire contents of the story in Doug Atchison's Akeelah and the Bee which concerns the value of the mentality of successful students which is classified into three parts, namely psychologically, sociologically, and pedagogically. The primary data in this research is dialogue or utterances between characters in the form of words, and the secondary data is visual evidence (picture). The techniques used in data collection are the direct observation methods and the content analysis method and using Descriptive Qualitative as an analysis technique. The expected outcome of this research is that there is a clear description of how the mentality of successful students in the film Akeelah and the Bee by Doug Atchison can be implicated in building up the student / college students' mentality.

Key words: Mentality, Successful, Implication, Akeelah and The Bee.

INTRODUCTION

Human being is a living thing that cannot live by themselves. To continue to live, humans need each other to succeed. One important role that cannot be erased from humans is education and knowledge. These two things can lead humans towards a better future life. However, to achieve it all, it is not possible to always go according to plan, sometimes humans will get obstacles and challenges of various problems. It is also undeniable that there are still people who give up when experienced with these obstacles and challenges of the various problems.

Studying at university level is also one of most important thing for humans, this is necessary in order to have a decent life. In the future. But, the fact that is found is that it is not always that easy to achieve it. Students usually gave up when they are entering the 5th

semester and above because of too many task were given by the lecturer let alone personal problem in their family. Sometimes they can't open their minds to remain calm and stay focused so that they can solve the problem one by one. This is the reasons what makes their mentality becomes weak and can be easily to give up, causing them to drop out of college, take time off from college, or even quit from college and decided to get married. What a waste of time!

Not many people can succeed in achieving success. People had their own experience made a mistake. In comparison, the number of those who fail is certainly still more than those who achieve success. Mentality, one of the keys to achieve success and unfortunately not owned by everyone, it is actually the most important thing that can help people to achieve success, no matter how

clever we are if there is no mentality in ourselves, we're nothing. If we have a strong mentality like a stainless steel, we will tend to be more easily accept and admit our own mistake without too much blaming our self. In other words, we will tend to make our own mistakes as a lesson in order to avoid to do the same mistakes in the future. The strongest mentality will not appear in our self easily. Like a muscle, a mentality must be trained every day to form properly-up to as strong as stainless steel. With a strong mentality, we might find it easy to go through our life's challenges and automatically achieve our dreams faster.

The writer took this movie as an object of research because it's an uplifting movie and have an intriguing side effect after watching it. This movie tells us a very deep message, a movie about how to keep up our spirit in dealing with various problem in life and how to build up strong mentality, suitable and useful for college student when they feels like surrendered and tired of all burdens while studying in college, such as too many task were given by the lecture, personal problem, problems with friends, etc. which can reduce their morale, distracted concentration, health and strength of mentality.

A story about an eleven years old little girl who want to achieve her goal to win the Scripps National Spelling Bee contest. The writer found that Akeelah Anderson's life is not easy, her father dead when she was six years old, her mom doesn't pay attention so much on her, her brother is in the air force, her other brother runs with local gangbangers and also drug dealer. She's smart, but her environment threatens to strangle her aspirations. Responding to a threat by her school's principal, Akeelah participates in a spelling bee to avoid detention for her many absences. Much to her surprise and embarrassment, she wins. From that moment on, her principal ask her to seek coaching from an English professor named Dr. Larabee for

the most prestigious regional bee who helps her to achieve her goal in winning the Scripps National Spelling Bee contest. Finally, she succeeded in proving herself that she can achieve her dream in winning the Scripps National Spelling Bee contest.

The research question in this thesis is: How is the mentality of a successful student in Movie *Akeelah* and *The Bee* by Doug Atchison can be implicated in building up the students' mentality?

This research is aimed to find out on how are the mentality of a successful student in Movie *Akeelah and The Bee* by Doug Atchison can be implicated to the Student's Mentality Building. In this study, the writer concerns on the mentality of a successful student found in Movie *Akeelah and The Bee* by Doug Atchison which is concern to Education especially for college students' mentality building. The data of this study are taken from a *Movie directed by Doug Atchison*. Consequently, the writer only show the data in the form of dialogue, utterances, and as well as visual evidence that attest how this study is implicated to Education, especially to students' mentality building.

LITERATURE REVIEW

A. Definition of Mental

The word mental is taken from Latin which is from the word mens or metis which means soul, life, and spirit. Thus mental are things related to psycho or psychiatric that can affect individual behavior. Every individual's behavior and expression is an encouragement and reflection of mental conditions. According to Al-Quusy (1970) quoted by Hasan Langgulung, defining "*mental is a comprehensive blend of various psychological functions with the ability to deal with psychological crises that afflict humans that can affect emotions and from these emotions will affect mental conditions*".

Another definition of "mental" quoted by Hakam Abbas in his website, defined that

mental is related to the mind, reason, memory or the process associated with thought, reason and memory, such as easy to forget, lazy to think, unable to concentrate, petty, greedy, pretentious, unable to make a good and right decision, not even having the ability to distinguish between the right and the wrong, the right and the vanity, halal and haram, and the useful and the mudharat.

In addition, according to *World Health Organization*, state that “*mental health is a state of complete physical, mental and social well-being and not merely the absence of disease or infirmity. (WHO, 2001.)*” This definition further clarifies that mental health is also closely related to physical health and behavior. WHO then provides an understanding of mental health as: “*A state of well-being in which the individual realizes his or her own abilities, can cope with normal stresses of life, can work productively and fruitfully, and is able to make a contribution to his or her community (WHO, 2001).*”

B. Definition of Mentality

Basically, another word of “mentality” is “mindset”, a habitual or characteristic mental attitude that determines how we will interpret and respond to situations. How we act and involve our physical actions to respond to a situation / problem and find out a solution to the problem.

According to a psychologist, Daniel Caridad (2016) state that “mentality” is defined as a “mindset”, our personal view/feelings, ideas, or even biases about a situation, person, or thing and the capacity to learn or complete intelligent thought. This means that mentality is literally the process of thinking.

Another definition of mentality according to a Ph.D Lecturer at Christian University, Bucharest, Elena Ianos-Schiller (2002) state that “Mentality” refers to the specific way of thinking of a person or collectivity, as an important factor (sometimes

even more important than it looks at the beginning), that may have a significant impact on the response in a particular context: historical period, geographical delimitation, civilization development etc. Influenced by different factors, mentality depends on the individual and collective education and culture besides the historical period, geographical area, religion and socio-economic development

C. Types of Mentality

According to a Standford psychologist, Carol Dweck (2019), there are two types of mentality as follows:

1. Fixed Mentality

In a fixed mentality, people believe their qualities are fixed traits and therefore cannot change. These people document their intelligence and talents rather than working to develop and improve them. They also believe that talent alone leads to success, and effort is not required.

People with a fixed mindset is to always want to appear intelligent because they believe that they were born with a fixed level of intelligence that cannot be modified. These people have a fear of looking dumb to people because they do not believe that they can redeem themselves once other people look at them as being unintelligent.

2. Growth Mentality

Alternatively, in a growth mentality, people have an underlying belief that their learning and intelligence can grow with time and experience. When people believe they can become smarter, they realize that their effort has an effect on their success, so they put in extra time, leading to higher achievement.

In a growth mentality, however, students believe their abilities and intelligence can be developed with effort, learning, and persistence. Their basic abilities are simply a starting point for their potential. They don't believe everyone is the same, but they hold

onto the idea that everyone can become smarter if they try.

3. Definition of Movie

In general, movie is known as a kind of entertainment in the form of a film-based or video-based motion picture that produced to entertain and to tells a story to the viewer. According to Hornby (2006:950), movie means a series of moving picture recorded with sound that tells a story, shown at cinema/movie. Movie or film is a term that encompassed individual motion pictures, the field of movie as an art form, and the motion pictures industry. Movies are produced by recording image from the world with cameras, or by creating images using animation techniques or special effect.

D. The Kinds of Movies

According to Heru Effendy (2009: 3-6) said that movie divided into three kinds as follows:

1. Documentary Films

The documentary is the designation given for the first film by the Lumiere brothers who tells the lives of workers in their factories. British film critic John Grierson believes the documentary is a creative way of representing reality. Documentary films present reality through a variety of ways and are made for a variety of purposes, documentary films can never be separated from the purpose of disseminating information, education, and propaganda for certain people or groups. Over time, various documentary film streams emerge, for example (docudrama).

2. Short Movie

The duration of a short story film is usually under 60 minutes. In many countries such as Germany, Canada, Australia, the United States, short story films are made as a stepping stone laboratory for a person / group of people to then produce long story films. This type of film is produced a lot by students

majoring in film or people / groups who like film and want to practice making films well.

3. Feature Length Films

Films with a duration of more than 60 minutes typically have a duration of 90-100 minutes. Films screened in bioskiop are generally included in this group. Some films even last more than 120 minutes.

RESEARCH METHOD

This research is a qualitative descriptive research about a movie entitled *Akeelah And The Bee* directed by Doug Atchison, and its label 2929 Productions, an Entertainment Company. The research method that used in this research is descriptive analysis method. Descriptive analysis method done by describing the facts which are then followed by analysis (Ratna, 2006, p. 53). In accordance with the name 'descriptive', the data that have been collected is in the form of words and pictures that can be displayed as quotes. According to (Ratna, 2013: 33), descriptive analysis method is a method that used to describe the facts (data from the movie) which are then followed by analysis.

According to Creswell (1998: 21) states that in the qualitative method, the researcher plays as the main instrument of data collection that compiles words analyze inductively, and observes the utterances delivered by the speaker. This will classify as qualitative research because the use of data is not in the numerical forms, but the in form of words. The data of qualitative research will collect using quoting, highlighting, and selecting the relevant expressions. Also, qualitative researchers aim to understand some aspects of social life.

Data Sources

According to Ratna, (2007: 47) data in literature research are words, sentences and discourse. The source of data for this research

is *Akeelah and The Bee* Movie directed by Doug Atchison and produced in year 2006 by 2929 Production, an Entertainment Company and has a duration for about two hours. In order to collect the data, the writer used Movie *Akeelah and The Bee By Doug Atchison* (2006) as the object of the study where to find out the subject of the study such as mentality of a successful student and its implication to students' mentality building in the scenes of the story and the character's utterances.

Research Data

According to Siswanto (2010: 70). The primary data sources are primary data, i.e., data that are selected or obtained directly from the source without intermediaries. The primary data in this research are words or sentences in the form of dialogue between characters which are then followed by concrete evidence such as visual images. And, the secondary data in this research is the words, transcripts, video, etc. which is can be found on the internet or other sources. In order to collect the data, the writer used Movie *Akeelah and The Bee By Doug Atchison* (2006) which has mentality of a successful student and it's implication to student mentality building found in the scenes of the story and character's utterances as subject of the study.

Data Collection Technique

In this research, to collect the data, the writer used direct observation method because it doesn't require to go to the field to conduct the research, its only requires the writer to do a "watch-and-observe" to the movie anytime and anywhere. According to APA Dictionary of Psychology, "*direct observation is a method of collecting data in which a researcher simply views or listens to the subjects of the research, without asking specific questions or manipulating any variables*". In this study, the writer also used content analysis technique in analyzing the data. This method is attempting to trace the

source of information in the form of document which are relevant to be researched. According to (Krippendorff, 2004), defined content analysis as "*The systematic reading of a body text, images, and symbolic matter, not necessarily from an author's or user's perspective*".

Creswell (1994: 148) states that the idea of library research is to purposefully select informants for documents or visual material that will best answer the research question. Furthermore, Creswell (1998: 110) explains that "Data collection is a series of interrelated activities aimed at gathering good information to answer emerging research questions". In doing this research, The writer take the data from the movie *Akeelah and The Bee* and the dialogue between the characters as well as visual evidence. Collecting data is an activity which should be done before doing this research, because that will be easier for the writer to finish this thesis.

The technique of collecting the data in this study will be taken based on the following steps:

1. Watching the movie *Akeelah and The Bee* that provides mentality of a successful student which can be implicated to construct the students' mentality.
2. Observing and taking notes of the character's utterances from the Movie *Akeelah and The Bee by Doug Atchison* to understand the mentality of a successful student found is related and can be implicated in constructing the students' mentality.
3. Analyzing the data by identifying parts in the movie that is related to the mentality of a successful student found in *Movie Akeelah and the Bee By Doug Atchison* and classify it according to Psychological, Pedagogical, and Sociological.
4. Highlighting the scenes of the story and the character's utterances in the movie which support to the mentality of a successful student.

5. Quoting the story to classify that there some scenes, character's utterances related to the mentality of a successful student that can be implicated in constructing the students' mentality.
6. Selecting and collecting the data about the mentality of a successful student found that it can be implicated to construct the students' mentality.

Data Analyzing Technique

In this research, the writer carried out the data analysis techniques in four steps, they are:

1. Identification of Successful Mentality
Identifying the instances of expression related to student Successful Mentality.
2. Classification of Successful Mentality
Classifying the student successful mentality based on Psychological, Sociological, and Pedagogical in the data.
3. Description of Student Successful Mentality
Elaborating the trends by defining and exemplifying the student successful mentality.
4. Explanation of Student Successful Mentality
Explicating how the student successful mentality itself leads to success.

Research Instrument

According to Sugiyono (2010: 305) in qualitative research, the instrument is the researcher himself. The position of researchers in qualitative research is as a *human instrument*, serves to determine the focus of research, choose informants as

sources of data, conduct data collection, assess data quality, analyze data, interpret data and make conclusions on its findings.

According to Endraswara, (2011: 5) important features of qualitative research in literary studies, including: The researcher is a key instrument that will read carefully literary work research is done descriptively, meaning that it decomposes in the form of words or pictures if needed, not in the form of numbers, prefers the process rather than the results, because of literary works is a phenomenon that invites interpretation and analyzing inductively.

RESULTS AND DISCUSSIONS

The next step of this research process is presenting the findings based on the formulation of the research question is it was stated in the previous chapter. To collect the data, the researcher watched the movie, observing and taking note of the characters utterances as long as visual evidence and the use of secondary data to get valid data. The researcher used the theory of H. Gurnee (1936), Jensen HE. (1952) And Zohar A. (2004).

FINDINGS

The following is the summary of the found Mentality of a Successful Student in the Akeelah and The Bee movie.

Based on the result of direct observation method and content analyzing technique, the writer found that there are three kinds of mentality found in the Akeelah and The Bee movie. They are Psychological, Sociological, and Pedagogical.

Table 1.1. The summary of the found mentality of a successful student in Akeelah and The Bee Movie

No.	Mentality (based on)	Kinds of Mentality Found	Performed at	Frequency
1	Psychological	a. Altruism	01:39:44 – 01:40:18, and at: 01:21:00 – 01:22:00	2
		b. Attitudes	00:38:26 – 00:39:00	1
		c. Close Relationship	01:10:56 – 01:13:04	1

No.	Mentality (based on)	Kinds of Mentality Found	Performed at	Frequency
		d. Persuasion	00:12:42 – 00:13:03, and at: 00:13:31 – 00:14:36	2
		e. Conformity	00:52:27 - 00:54:49	1
2	Sociological	a. Interdependences	00:07:46 – 00:08:22	1
		b. Cooperation	00:14:54 – 00:15:54	1
3	Pedagogical	a. Methodology	00:50:16 – 00:50:41	1

A. Psychological

Psychological is to be specific about mindset or behavior of someone. According to H. Gurnee (1936), there are 7 kinds of elements of Psychological aspect, but the writer only took 5 elements out of 7, they are altruism, attitudes, close relationship, persuasion, and conformity.

1. Altruism

Altruism is often described as selflessness, an act of taking care the interests and happiness of others.



Picture 1

Akeelah and Dylan are on the stage of the National Spelling Bee competition after Akeelah wittingly spells a wrong word for Dylan.

According to H. Rachlin (2002), Altruism is the principle and moral practice of concern for happiness of other human beings, resulting in a quality of life both material and spiritual. In other words, altruism is a “Selflessness”, meaning that we only focus on being willingly to sacrifice ourselves for the happiness of others, like the obligation to be a father to earn a living for the family. In conclusion, this context is classified into Altruism because

based on the consideration of what Akeelah did for Dylan.

2. Attitudes

Attitudes is a settled way of thinking or feeling about someone or something, typically one that is reflected in a person's behavior.



Picture 2

Akeelah asking apologize to Dr. Larabee because of being insolent last time see came to his house.

According to Gordon Allport (2017), defined that “Attitude is a mental and neural state of readiness, organized through experience, exerting a directive or dynamic influence upon the individual’s response to all object and situations with which it is related.” In conclusion, this context is classified into Attitudes based on the consideration of Akeelah that asking apologize to Dr. Larabee because of being so insolent the first time she came to Dr. Larabee’s house, she promises that she won’t be insolent anymore, what a good attitude tough.

3. Close Relationship

Close relationship is often described as a very important close relationship between one person and another.



Picture 3

Tanya talking to Akeelah after she went home from Dr. Larabee's house she gave some word that can increase Akeelah's spirit in doing the Bee.

This is where Tanya starts to change her mind from not paying attention so much on what Akeelah did to support Akeelah for the competition and gave a sentence that evokes Akeelah's spirit, the sentence is "I bet if you just look around, you have 50,000 coaches, starting with me". And finally, Akeelah managed to remain enthusiastic and brave enough to seek coaches by those who closest to where she lives. According to a Psychologist Doctor, Meredith Hansen (2018) state that "Trust allows a couple to know that their partner is there for them, truly cares about them, is coming from a good place, and supports them." In conclusion, this context is classified into Close Relationship based on the consideration of what Tanya did to Akeelah.

4. Persuasion

Persuasion is described as an act of persuading someone to do something.



Picture 4

Devon talking to Akeelah in her bedroom when Devon wants to leave the house and get back to his US Air Force base.

Devon wants to leave from home back to the base. Devon then asks Akeelah to keep doing this contest. He persuaded Akeelah that he will parachute down from an airplane to Washington DC to see that if Akeelah can manage her way to the Scripps National Spelling bee that located in Washington DC. According to G.R Miller (1980) defined that persuasion is a fundamental form of social influence on human decision making, a persuasive communication as any message that is intended to shape, reinforce, or change the response of others. So, this context is classified into Persuasion based on the consideration of what Devon did to Akeelah in order she could remain calm and spirit in doing the spelling bee contest. It can be seen from his dialog, "*Tell you what, just do this contest. And if you make it to DC, I will parachute down to see you, would you like that?*"

5. Conformity

Conformity is described as a type of social influence involving a change in belief or behavior in order to fit in with a group or the person itself.



Picture 5

Dr. Larabee train Akeelah in his garden and then finally found Akeelah's mnemonic device in order she can remember words better.

When Dr. Larabee told Akeelah to spell the one word he gave, Akeelah was annoyed by a sound of dog's barking. Then, Dr. Larabee asked Akeelah what is she doing

with her hand, Akeelah always answer with don't know. And finally, Dr. Larabee asked Akeelah to jump using a jumping rope while spelling the word accompanied with the tempo sound from Dr. Larabee and found that Akeelah's mnemonic device was "Keeping time". One source of Akeelah's initial alienation is that she feels cut off from her community. But when she qualifies for the nationals in Washington and Dr. Larabee cuts her loose, giving her four yellow boxes full of cards with words to learn, she is forced to find help wherever she can, from her family, friends, classmates, and neighbors. In one of the most surprising scenes, a drug dealer shares that he won a contest in grade school for writing a poem; he promises to share it with her if she wins in Washington. Better than that, he and his gang help her to prepare for the national spelling bee contest. According to Saul McLeod (2016) defined Conformity is a type of social influence involving a change in belief or behavior in order to fit in with a group. In conclusion, this context is classified into Conformity based on the consideration of what Akeelah's got in the neighborhood where she lived.

B. Sociological

Sociological is to be specific about a society, patterns of social relationship, social interaction, and culture that surrounds everyday life. According to Jensen HE. (1952), there are 4 kinds of elements of Sociological, but the writer only take 2 out of 4, they are, interdependence and cooperation.

1. Interdependence

Interdependence is a term for two parties who are dependent on each other.



Picture 6

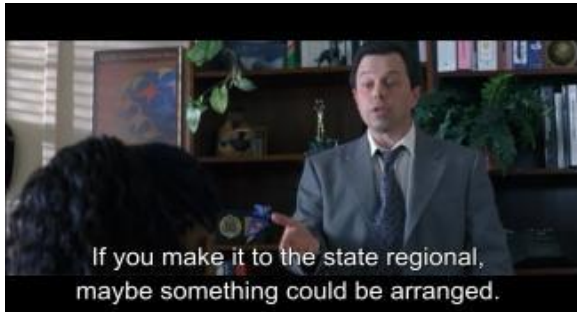
The principal talking to Akeelah in his office about the benefit of doing the spelling bee for their school.

This conversation takes place when the Principal found Akeelah on her way to her class. Then, the Principal asked Akeelah to come to his office to talk about spelling bee competition. The Principal then explain how students in all over the country compete each other from district, state regionals, and then trying to make it to the national spelling bee. The Principal then wished next year, one of his students is in national spelling bee and said whoever wins the school bee today, gets a chance to represent Crenshaw at the district bee in order to earn money for their school. But, Akeelah refuses to do the school bee because she doesn't want anybody call her a freak and a brainiac. Finally, the principal said maybe Akeelah will be "down" for spending the rest of her semester in detention for all of her absences. So, Akeelah have no choice to do the school bee in order not to be detented for the rest of the semester because of her absences. According to Peter Kaufman (2012) defined that Sociological Interdependence is the nation that we all rely on each other. To say that we are interdependent is to recognize that we are all connected and dependent on one another. In conclusion, this context is classified into Interdependence based on the consideration of Akeelah who want to do the bee in order to avoid to be detented for the rest of the semester in her school. It can be seen from The Principal's dialog "Well, maybe

you'd be "down" for spending the rest of the semester in detention, for all of your absences."

2. Cooperation

Cooperation is a term of cooperation between two parties for personal gain and mutual benefit.



Picture 7

Akeelah and the principal talking each other where Akeelah wanted a new outfit for the spelling bee.

Akeelah finally decided to change her mind, from not wanting to take part in the spelling bee competition, to want to do the competition. After hoping to get new clothes for this competition, the headmaster was not sure, and said if Akeelah can pass to the state regional, maybe she will get it. The principal was happy and informed Akeelah that the principal had succeeded in persuading Dr. Larabee to want to be her coach during Dr. Larabee's sabbatical, Akeelah initially didn't want to be coached by Dr. Larabee because she feels she can do it by her own, but the principal then explains that all spellers around the world have coaches, and so do her. According to Jake P. Moskowits and Paul K. Piff (2017), defined that cooperation is when multiple partners work together toward a common goal that will benefit everyone. In conclusion, this context is classified into Cooperation based on the consideration on Akeelah wanted to do the contest for a new outfit and at the same time it'll be good for her school if Akeelah wanted to do the spelling bee contest.

C. Pedagogical

Pedagogical is often described as the act of teaching. To be specific is how knowledge and skills are imparted in an educational context, and it considers the interactions that take place during learning. According to Zohar A. (2004), there are 2 elements of pedagogical, but the writer only take 1 out of 2, namely methodology.

1. Methodology

Methodology is described as a system of methods used in a particular area of study or activity.



Picture 10

Dr. Larabee coaching Akeelah for the national spelling bee using his method.

Akeelah suddenly get bored and gave up with the hard training guided by Dr. Larabee, then Dr. Larabee advised Akeelah firmly not to be easily discouraged and to stay strong in training for the competition using methods from dr. Larabee. According to Drs. Agus M. Hardjana (2015) defined that method is a well thought out method that follows certain steps in order to achieve a goal. In conclusion, this context is classified into methodology based on the consideration of Dr. Larabee who coach Akeelah for the spelling bee contest using his methods. It can be seen from hiss dialog, *"You'll win using my methods, by first understanding the power of language, then by deconstructing it, breaking down to its origins, to its roots, you'll consume it, you'll own it!"*

DISCUSSION

The following is the discussion on how the mentality in the movie are implicated to students' mentality building;

1. Keep helping even in trouble.

Akeelah helped Dylan to win 1st place in the competition because he never won 1st place, but apparently Dylan also helped Akeelah to achieve the same goal. It can be seen in the scene: *Akeelah wittingly spells a wrong word for Dylan to win but apparently Dylan wittingly spells a wrong word as well for Akeelah, finally both of them work together to achieve their goal.*

The Implication:

Even though we are in a difficult situation, we must also be able to help others and that person will also help us get the same thing. This is in accordance with a dalil which means, actually, in trouble there is an ease.

2. Lack of teaching manners or indifference to the mother and siblings shape Akeelah's disrespectful behavior towards those around her.

Teaching manners that should be done early on by the family can form the character of a person who is good, virtuous, and has good ethics so that they can be accepted in the community. A good solution for instilling good manners is to look at and guide the child and rebuke him directly like Dr. Larabee scolds Akeelah for saying rude disrespect to him directly or Mother scolds Akeelah for faking her father's signature.

The Implication:

Most people are not confident and are always afraid to do something because they don't have good ethics. So, having good ethics and manners can increase self-confidence in a person so that they tend to pass through the challenges they faced easier.

3. Everyone in this world needs someone else who can be a motivator for that person's progress.

According to Sardiman (1998: 75) state that, with the existence of motivation that awakens Akeelah's spirit can lead to learning activities and directs Akeelah to achieve the goals to be achieved. Motivation to learn by parents, family member or teachers helps build the right direction to achieve hope. The motivation can be seen in the scene: *Akeelah's brother, Devon, came to her bedroom to permit himself to Akeelah that he want to get back to the military base. Devon provides supports and motivation to keep her spirit by telling his past before he becomes a member of the military.*

The Implication:

Living things are creatures that need each other, including in the world of education. Someone who is currently undergoing an education will sometimes face problems that can cause stress. This can happen due to a lack of motivation and encouragement from others. So, get close to people who can give you a positive aura so that your heart and mind can calm down and help you achieve what you want to achieve.

4. Needs supporter.

Akeelah needs support from everyone, such as the support of siblings, mother, teachers, and those around her environment where she live. Support can form a child's belief identity.

What can be seen from this film is the support or encouragement of the child who was not confident in his talent, causing the intention to develop it even greater.

The Implication:

Children who are currently in education will sometimes become easily discouraged when they experience many obstacles during their education. At times

like this, children will easily do something that is out of line to vent their feelings of discouragement and even harm themselves. This is where the role of the closest person is to always provide support and encouragement so that the child does not lose direction and they can achieve their desired success.

5. Find other People in Your Neighborhood.

Motivational support is not enough to get from the closest people, we also occasionally need support from people around where we live. This can be an additional motivation to stay motivated as there are more people believe in us and support us. Basically, the more new people came support you, the more enthusiasm you would get.

According to Hamalik (1992: 173), state that the definition of motivation is a change in energy in a person which is marked by the emergence of feelings and reactions to achieve goals.

The Implication:

If we feel lost and feel empty, then we need to start looking for people around our neighborhood or those who have the same position as us. So basically, we've accidentally managed to motivate ourselves to keep up our spirit about achieving the success that we want to achieve.

6. Start to Cooperate.

In the film, it appears that Akeelah has started to accept her principal's offer, Mr. Welch, to take part in the spelling bee competition, and later Akeelah will get new clothes that she can use when participating in the competition which is she has been expected. It was also appear that the principal had done everything necessary to make Akeelah win in the spelling bee competition.

According to Moh. Jafar Hafsa (2014), state that this cooperation is the term of partnership, which means a business strategy carried out by two or more parties within a certain period of time to gain mutual benefits with the principle of mutual need and mutual growth.

The Implication:

Do not give up and think that we are the only one who facing problems, start looking for friends who have the same problem as us and start work together with them, the more friends work together, the greater the chance to get through the problem and achieve the desired success.

7. Creativity of Thinking

Creative Thinking in films consists of both Akeelah and the characters in the film apply or work creatively. In being creative, Akeelah responds to several events, including responses of Akeelah tired of the pressure, which triggers creative thinking and work.

Thinking and working creatively from the character Akeelah can be found in the following scene: *Using the finger tapping method to concretize the sequence of letters in the word to be spelled.*

The Implication:

Like in the discussion before, children who is undergoing an education sometimes will face problems that can cause them to discouraged or even stress, this is where the role of creative thinking must exist. Because, if we are able to think clearly and creative, we can also solve problems on our own as well. Actually, in trouble, there is an ease.

8. Akeelah's Intrinsic Motivation.

What is used as motivation from within that drives Akeelah's creative success rate is her desire to be able to take

part in a national spelling competition, as shown in the scene: *Akeelah saw the national champion spelling bee on a TV broadcast that she watched at a glance.*

The Implication:

Everyone who is struggling to achieve the desired success will sometimes feel easily discouraged if they do not find the person who has achieved success first. This role is very useful to motivate someone not to give up easily and to remain enthusiastic in fighting in order to achieve this success, including a person who is currently undergoing and education.

9. Taking note for important things.

Akeelah always write down in her book every new word that she heard and then learn it soon after she wrote it. This is useful to help Akeelah easily remember and learn the word she just got. The importance of taking note can be seen in the scene: *Akeelah wrote a new word in her book after watching the winning word of the national spelling bee champion, Brunneous.*

According to Reber & Reber (2010) state that Human brain memory is a mental function that maintains information about stimuli, events, images, ideas, and so on, after the initial stimuli are no longer present.

The Implication:

The human brain has insufficient memory to always remember what is obtained, with someone who has the habit of taking note of what he has got, this person has a high curiosity and will make it easier for him to achieve the desired success especially for those who are undergoing an education.

10. Instill a principle that can make us not give up easily.

Humans have principles in their lives so that they can live a happy life every day,

one of the principles is the principle of achieving success. In the film, Akeelah have remained enthusiastic and active in achieving her goal of winning the Scripps National Spelling Bee Contest. Although her family have less attention to her, she had one principle that kept her to keep enthusiastic, namely his father who have already passed away. It can be seen in the scene: *Akeelah talk to her father's photograph "you'd let me do it" after having a debate conflict with her mom"*

According to Brian Tracy, Success is the desire to live your life the way you want, to do what you want to enjoy, to be surrounded by family, friends and people you respect.

The Implication:

Instill one principle that will keep us excited despite the many obstacles, especially for people who are undergoing education, it will greatly help us in achieving success, for example, parents. Many students drop out of college, don't continue to have an education, or even stop their education and decided to get married, it's because they don't remember the sacrifices and struggles their parents had in educating and raising them.

CONCLUSION & SUGGESTIONS

Conclusion

Based on the findings and discussion presented in chapter IV, Related to the Mentality as seen in the *Akeelah and The Bee* movie scene, the mentality are classified into three kinds such as Psychological, Sociological, and Pedagogical.

The word *Psychological* is used to describe mental or emotional rather than physical, but it can also be used when referring to the field of psychology. Psychological related to how human think in their minds then how to interact on what they've just thinking. It leads someone to know what behavior they have. In this *Akeelah and The Bee* movie,

researcher found the mentality based on psychological aspect, such as Aggression, Altruism, Attitudes, Close relationship, Attribution (acknowledgement), Persuasion and Conformity.

Sociological is defined as the study of human values, relationship, beliefs, interaction with other and how to act with others. In this study, the researcher found the mentality based on sociological aspect, such as Differences, Interdependence, Cooperation and Conflict.

Pedagogical is defined as an academic discipline, is the study of how knowledge and skills are imparted in an educational context. The most powerful definition of *Pedagogical* is where students and teachers produce work and learning together, the teacher has become more of a mentor or coach helping students achieve the learning goal. In this study, the researcher found the mentality based on Pedagogical aspect, such as Curriculum (content being taught) and Methodology.

Findings and discussion, researcher found that there were three kinds of Mentality of A Successful Student that had been shown. Such as Psychological, Sociological, and Pedagogical. The data were presented by looking in the dialogue and interpreting the dialogue itself which is according to the result of research or the theory of experts. In the *Akeelah and The Bee* movie, the characteristic which show about three kinds of mentality was shown by some dialogues which proven by script. Another way is from action. The data had shown when researcher analyzed the data by reading the script while watching the movie and looking the action in which the character did. Some data showed directly by

REFERENCES

Abbas, Hakam. hakamabbas.blogspot.com. (2014). *Pengertian Mental*. <http://hakamabbas.blogspot.com/2014/01/pengertian-mental.html> (Accessed April 11, 2020)

the dialogue, characters action, and scene. Some others data are showed indirectly by the interpretation of the researcher. Directly means showed through the dialogue and indirectly showed by the researcher interpreting the dialogue.

SUGGESTIONS

This research study the mentality of a successful student as seen in the *Akeelah and The Bee* movie directed by Doug Atchison. The researcher realizes that his research is far from being perfect. Mistakes and weakness is still happened in many aspect such as method, analyses, and discussion. Positive suggestion and criticism still needed by the researcher in order to make the study becomes better. Based on this research, the researcher has the recommendation as follows:

1. For Students / College Students

This film is a very good recommendation for them. Because this film tells of a student who spends his days with persistence for a big goal. Of course, as long as the process is not easy, obstacles and challenges will certainly come your way. But the cast in the film can pass through it because she has a strong spirit and mentality. This is what students or college students can learn in order to achieve what they have dreaming of while undergoing an education.

2. For Researcher

This researcher can be a reference to next researcher who are interested in this study. Positive criticism is needed to make the next study becomes more better.

Anwar, Syahrul. Kompasiana.com. (2015). *Mentalitas Kunci Utama Dalam Mencapai Keberhasilan Belajar Siswa di Kelas*. <https://www.kompasiana.com/www.syahrul.com/54f86a06a333113d028b45b5/mentalitas-kunci-utama-dalam->

- mencapai-keberhasilan-belajar-siswa-di-kelas (Accessed June, 25 2020)
- Athanassiou, Takis. *mystudentvoices.com*. (2015). *The Concept of Failure*. <https://mystudentvoices.com/the-concept-of-failure-370a2f3303e6> (Accessed July 13, 2020)
- Balson, Maurice. 1996. *Bagaimana Menjadi Orang Tua yang Baik*. Jakarta : Bumi Aksara.
- Bosse, Webste. 2011. *The Power of Mindset in Shaping Student Success*. Learning Landscape. Canada
- Chegg Study. *Chegg.com*. (2020). *Attribution*. [https://www.chegg.com/homework-help/definitions/attribution13#:~:text=Attribution%20is%20an%20explanation%20for,behavior%20and%20that%20of%20others.&text=The%20supposition%20that%20something%20outside,external%20\(or%20situational\)%20attribution.](https://www.chegg.com/homework-help/definitions/attribution13#:~:text=Attribution%20is%20an%20explanation%20for,behavior%20and%20that%20of%20others.&text=The%20supposition%20that%20something%20outside,external%20(or%20situational)%20attribution.) (Accessed on 09 September 2020)
- Clear, Johanna. *Lifehack.org*. (2018). *7 Simple Steps to Build A Successful Mindset*. <https://www.lifehack.org/articles/communication/straightforward-formula-for-living-your-success.html> (Accessed July 14, 2020)
- Cogn, Soc. *ncbi.nlm.nih.gov*. (2008). *Social Cognitive and Affective Neuroscience*. [https://www.ncbi.nlm.nih.gov/pmc/articles/PMC2607059/#:~:text=Persuasion%20is%20a%20fundamental%20form%20of%20social%20influence%20on%20human%20decision%20making.&text=Miller%20defined%20persuasive%20communication%20as,other%20\(Miller%2C%20201980\).](https://www.ncbi.nlm.nih.gov/pmc/articles/PMC2607059/#:~:text=Persuasion%20is%20a%20fundamental%20form%20of%20social%20influence%20on%20human%20decision%20making.&text=Miller%20defined%20persuasive%20communication%20as,other%20(Miller%2C%20201980).) (Accessed 10 September 2020)
- Corlett (Eds.), *Evolution of human work; a practical ergonomics methodology* (2nd ed., pp. 45–68). Philadelphia: Taylor and Francis.
- Creswell, J. W. (1998). *Qualitative Inquiry and research design. Choosing among five Traditions*. Thousand oaks, CA:SAGE publications.
- Drury, C. G. (1995). *Methods for direct observation of performance*. In J. R.Wilson & E. N.
- Dweck, Carol. *Developgoodhabits.com*. (2020) *Fixed Mindset vs. Growth Mindset* <https://www.developgoodhabits.com/fixe-d-mindset-vs-growth-mindset/> (Accessed June 12, 2020)
- Ellison, J. W. (2007). *Akeelah and the Bee*. Jakarta: Yayasan Obor Indonesia.
- Ghezta, Mrinal. *Topperlearning.com*. (2014). *What is the difference between social difference*. <https://www.topperlearning.com/answer/what-is-the-meaning-of-social-difference-social-division-what-do-you-mean-and-what-is-the-difference-between-overlapping-and-cross-cutting-if-agricul/yljy64tt> (Accessed on September 12, 2020)
- Hananti, Aqidah. 2019. *Keberhasilan Kreatif Tokoh Akeelah dalam Film Akeelah And The Bee dengan Teori Persimpangan Kreatif (The Creativity Intersection)*. Banyumas, Jawa Tengah. Universitas Muhammadiyah Purwokerto.
- Ianos-Schiller, Elena. 2002. *Education, Mentality, and Culture in the Internet Era*. Christian University. Bucharest
- IeduNote. *Iedunote.com*. (2017). *Attitudes: Definition, Nature, And Characteristics*. <https://www.iedunote.com/attitude-definition-characteristics-types#:~:text=According%20to%20Gordon%20Allport%2C%20%E2%80%9CAn,with%20which%20it%20is%20>

- [20related.%E2%80%9D](#) (Accessed on 09 September 2020)
- IMDB. [Imdb.com. \(2006\). *Akeelah And The Bee Plot Summary.* <https://www.imdb.com/title/tt0437800/plotsummary> \(Accessed April 11, 2020\)](http://www.imdb.com/title/tt0437800/plotsummary)
- Kartono. (1992). *Education and Personality*. Bandung: Mandar Maju.
- Kasolo. Wilson. [fao.org \(2015\). *Reviewing Curricula – Rationale, Process and Outputs.* \[http://www.fao.org/3/Y2993E/y2993e13.htm#:~:text=According%20to%20Skilbeck%20\\(1984\\)%2C,by%20training%20or%20teaching%20organizations\]\(http://www.fao.org/3/Y2993E/y2993e13.htm#:~:text=According%20to%20Skilbeck%20\(1984\)%2C,by%20training%20or%20teaching%20organizations\). \(Accessed on September 15, 2020\)](http://www.fao.org/3/Y2993E/y2993e13.htm#:~:text=According%20to%20Skilbeck%20(1984)%2C,by%20training%20or%20teaching%20organizations)
- Kaufman, Peter. [Everydaysociologyblog.com. \(2012\). *Happy Interdependence Day.* <https://www.everydaysociologyblog.com/2012/07/happy-interdependence-day.html> \(Accessed on September 12, 2020\)](https://www.everydaysociologyblog.com/2012/07/happy-interdependence-day.html)
- McLeod, Saul. [Simplypsychology.org. \(2016\). *What is Conformity.* <https://www.simplypsychology.org/conformity.html> \(Accessed on 10 September 2020\)](https://www.simplypsychology.org/conformity.html)
- Moskowitz, J. P. & Piff, P. K. (2017). Cooperation. In R. Biswas-Diener & E. Diener (Eds), *Noba textbook series: Psychology*. Champaign, IL: DEF publishers. DOI:[nobaproject.com](https://doi.org/10.21963/noba.v1i12.p01)
- Munawaroh, Siti. 2016. *An Analysis Values Found in the Pirate Fairy Movie*. IAIN Tulungagung. Tulungagung.
- Padmi, Ni Made Diah. [counselingtreatment.weebly.com \(2013\). *Bimbingan konseling,* <http://counselingtreatment.weebly.com/kesehatan-mental.html> \(Accessed April 10, 2020\)](http://counselingtreatment.weebly.com/kesehatan-mental.html)
- Palaskas, Kitiya. [Kitiyapalaskas.com. \(2018\) *The concept of success.* <https://www.kitiyapalaskas.com/blog/2018/the-concept-of-success> \(Accessed July 13, 2020\)](https://www.kitiyapalaskas.com/blog/2018/the-concept-of-success)
- Portal Media Pengetahuan Online. [Seputarpengetahuan.co.id \(2015\). *22 Pengertian Metode dan Metodologi Menurut Para Ahli \(Lengkap\).* <https://www.seputarpengetahuan.co.id/2015/02/15-pengertian-metode-dan-metodologi-menurut-para-ahli.html#:~:text=Metodologi%20secara%20bahasa%20berasal%20dari%20bahasa%20yunani%20yaitu%20metodos%20dan%20logos.&text=Jadi%20metodologi%20adalah%20ilmu%20atau,dikaji%20atau%20diteliti%20secara%20ilmiah>. \(Accessed on September 15, 2020\)](https://www.seputarpengetahuan.co.id/2015/02/15-pengertian-metode-dan-metodologi-menurut-para-ahli.html#:~:text=Metodologi%20secara%20bahasa%20berasal%20dari%20bahasa%20yunani%20yaitu%20metodos%20dan%20logos.&text=Jadi%20metodologi%20adalah%20ilmu%20atau,dikaji%20atau%20diteliti%20secara%20ilmiah)
- Praktikno. 2012. *Pengaruh Perhatian Orang Tua dan Intensitas Belajar Kelompok Terhadap Minat Belajar Siswa kelas V Sekolah Dasar Negeri Segugus Cahyana Kecamatan Rembang Purbalingga Tahun Pelajaran 2011/2012*. Skripsi. Yogyakarta : FIP UNY.
- Putri, Riska. [Riskaputri12.blogspot.com. \(2016\). *Pengertian Kesuksesan.* <http://riskaputri12.blogspot.com/2016/07/pengertian-kesuksesan.html?m=1> \(Accessed May 14, 2020\)](http://riskaputri12.blogspot.com/2016/07/pengertian-kesuksesan.html?m=1)
- Rexroth, Kenneth. [Britannica.com. \(2019\). *Literature.* <https://www.britannica.com/art/literature> \(Accessed June 06, 2020\)](https://www.britannica.com/art/literature)
- Rodriguez, Jonathan. [Christianasnwer.net. \(2006\). *Movie Review.* <https://christiananswers.net/spotlight/movies/2006/akeelahandthebee2006.html> \(Accessed June 06, 2020\)](https://christiananswers.net/spotlight/movies/2006/akeelahandthebee2006.html)
- Salam, Idris. [Kompasiana.com. \(2018\). *Pendidikan Mental Untuk Membentuk Karakter Anak.* <https://www.kompasiana.com/elfakiridris/5a599d0abde57553a564dcc3/pendidikan-mental-untuk-membentuk-karakter> \(Accessed June, 25 2020\)](https://www.kompasiana.com/elfakiridris/5a599d0abde57553a564dcc3/pendidikan-mental-untuk-membentuk-karakter)

- Sarafino. 2002. *Health Psychology: Biopsychosocial Interaction*. Fifth Edition.
- Tartakovsky, Margarita. Psychcentral.com. (2018). *3 keys to a strong relationship*. <https://psychcentral.com/blog/3-keys-to-a-strong-relationship/> (Accessed 09 September 2020)
- Tran, Johnny. Students.org. (2016). *How to Become an Intellectual Giant: Developing Your Student Mentality*. <https://www.students.org/2016/01/19/how-to-become-an-intellectual-giant-developing-student-mentality/> (Accessed July 15, 2020)
- WHO. (2001). *Basic documents, 43rd Edition*. Geneva: World Health Organization.
- Wikipedia. en.wikipedia.org. (2014). *List of Genres*. https://en.wikipedia.org/wiki/List_of_genres (Accessed June 11, 2020)